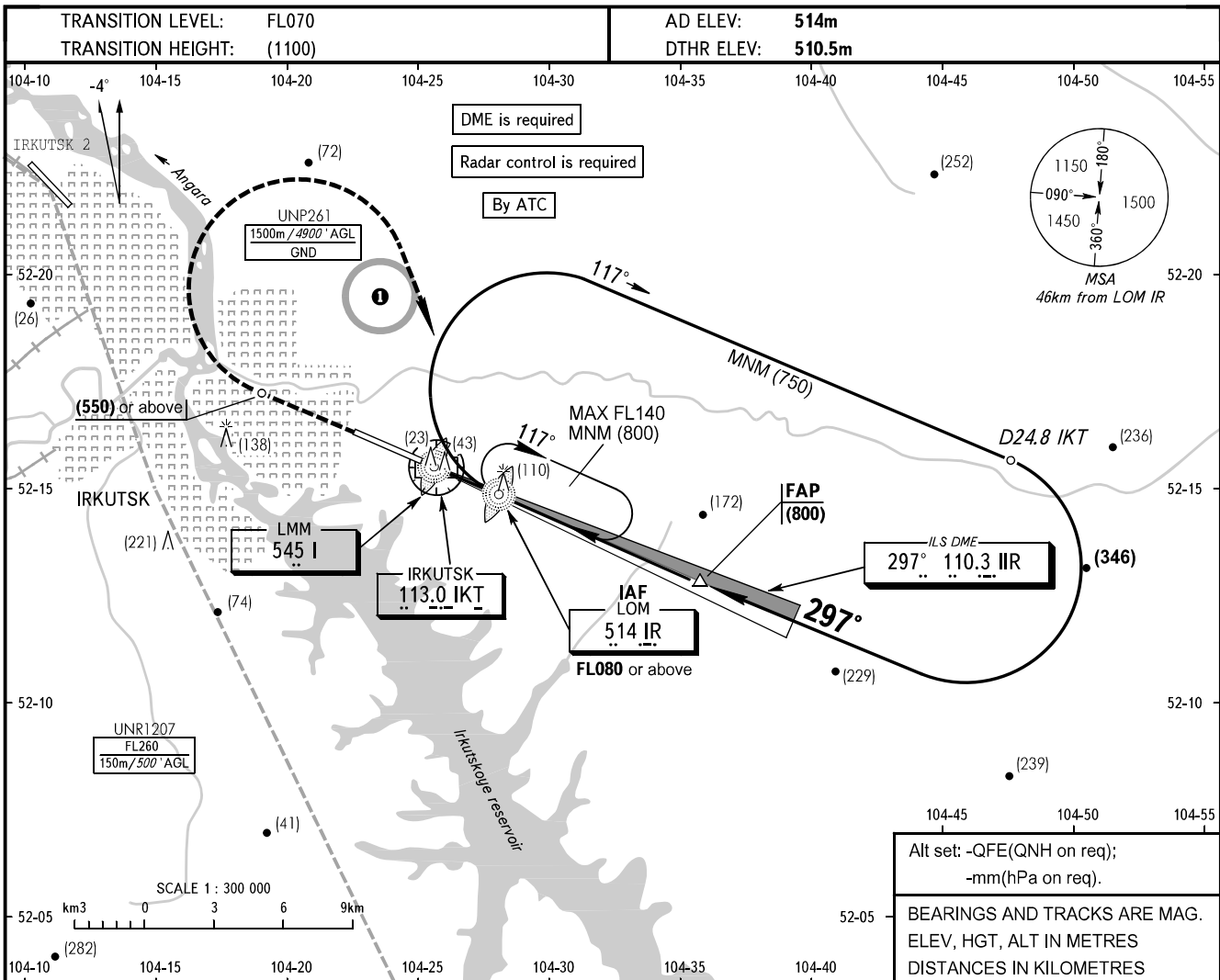


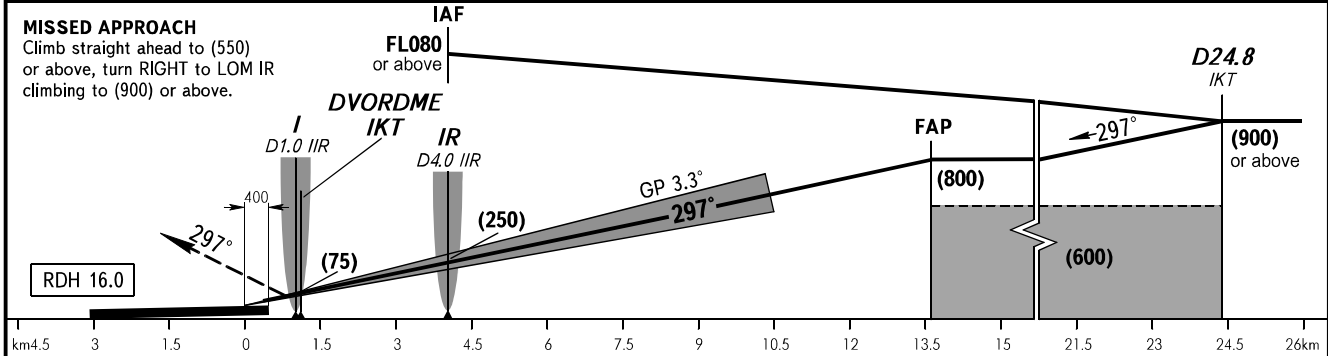
**INSTRUMENT  
APPROACH  
CHART - ICAO**

RADAR **119.300**  
TOWER **118.100**

**IRKUTSK, RUSSIA**  
IRKUTSK  
ILS CAT I RWY 30



DME IIR	2.0	4.0	6.0	8.0	10.0	12.0
HEIGHT	(135)	(250)	(365)	(480)	(595)	(710)



OCA(H)		A	B	C	D	DL	<b>WARNING</b> Zero range of DME IIR is indicated at RWY 30 DTHR. ① ACFT flights to/from IRKUTSK AD are approved.						
Straight-in	<b>CAT I</b>	565(54)	567(56)	569(58)	572(61)	576(65)							
	Approach												
Circling		685(175)	710(200)	770(255)	855(340)	855(340)							
GROUND SPEED		km/h	150	180	210	240	270	300	330	360	390	420	450
RATE OF DESCENT		m/s	2.4	2.9	3.4	3.9	4.4	4.8	5.3	5.8	6.3	6.8	7.3