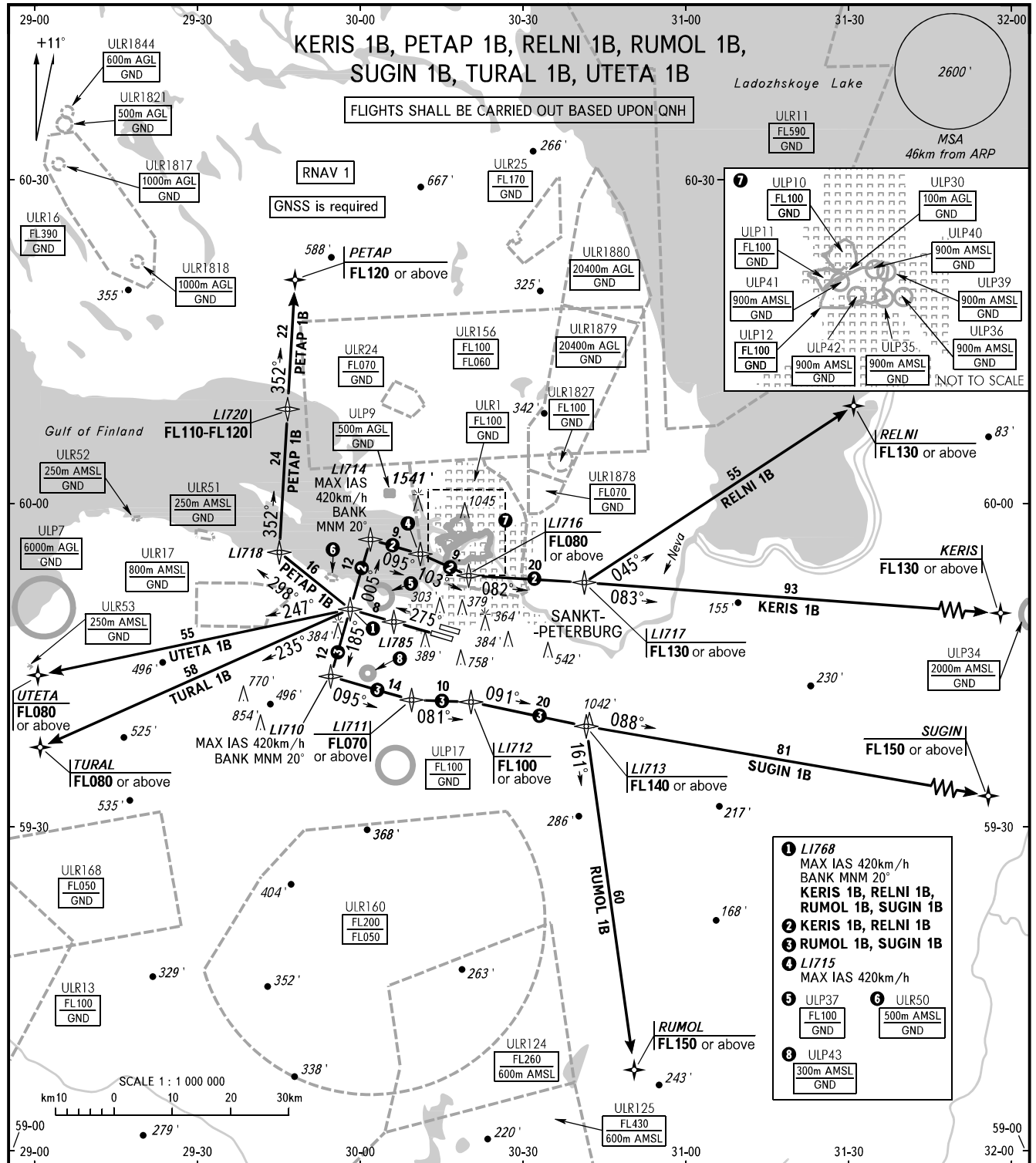


STANDARD DEPARTURE CHART  
INSTRUMENT (SID) - ICAO

TRANSITION  
ALTITUDE : 3500'

SANKT-PETERBURG, RUSSIA  
PULKOVO  
RNAV RWY 28L



TOWER	118.700
KRUG	120.300
APPROACH Sector 1 (EAST)	H24 119.300
Sector 2 (WEST)	0600-1600 125.200
Sector 2 (WEST)	1600-0600 119.300

**WARNING**  
The minimum climb gradients are as follows (required due to the airspace structure only):  
- 6.4% for SID KERIS 1B, RELNI 1B up to FL130;  
- 6.4% for SID SUGIN 1B, RUMOL 1B up to FL120;  
- 6.2% for SID PETAP 1B up to FL110.

BEARINGS AND TRACKS ARE MAGNETIC  
ALTITUDES AND ELEVATIONS ARE IN FEET  
DISTANCES ARE IN KILOMETRES