

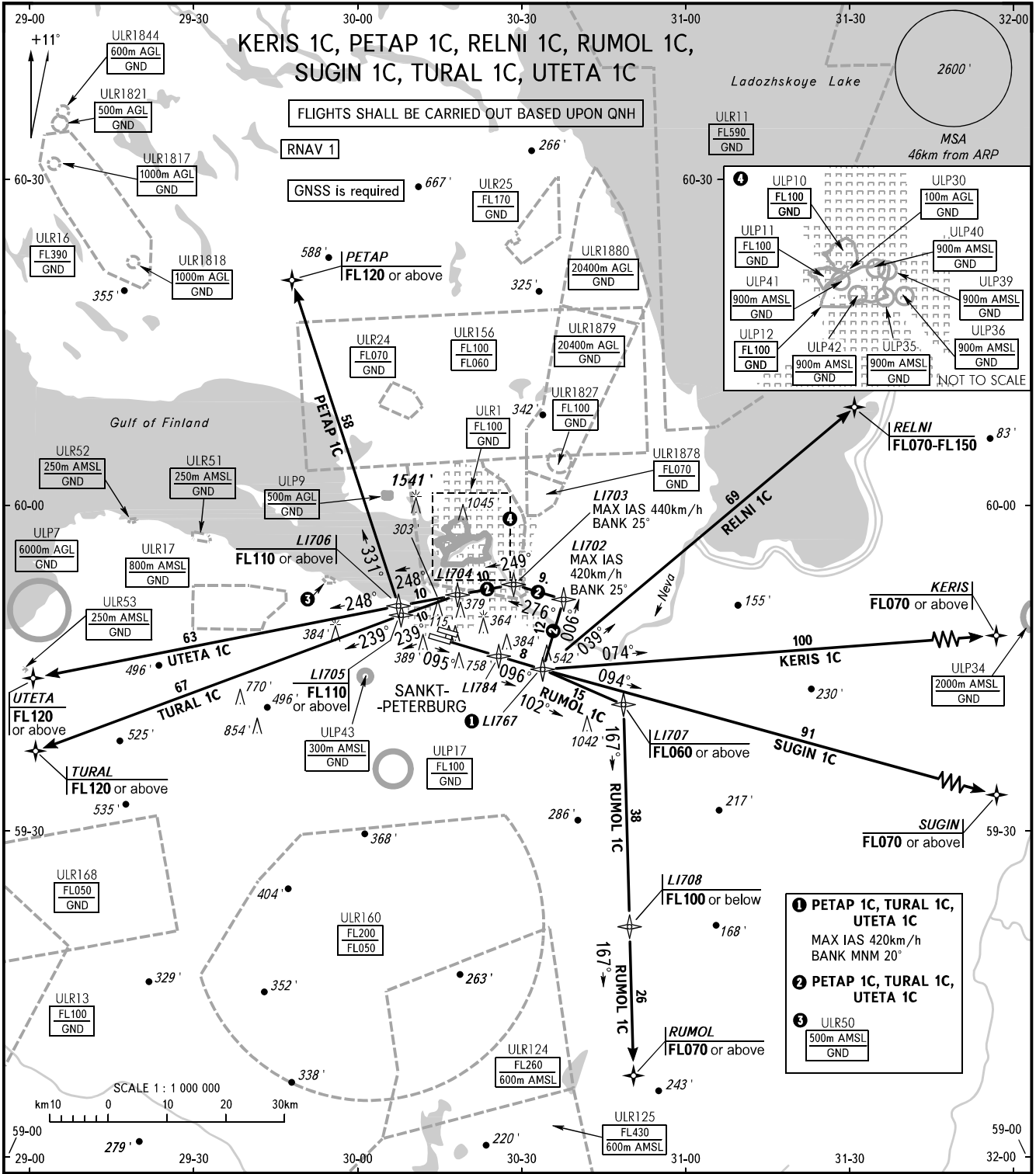
STANDARD DEPARTURE CHART  
INSTRUMENT (SID) - ICAO

TRANSITION  
ALTITUDE : 3500'

SANKT-PETERBURG, RUSSIA

PULKOVO

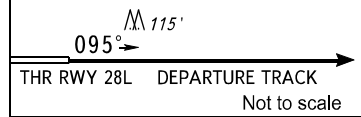
RNAV RWY 10R



TOWER	118.700
KRUG	120.300
APPROACH Sector 1 (EAST)	H24 119.300
Sector 2 (WEST)	0600-1600 125.200
Sector 2 (WEST)	1600-0600 119.300

**WARNING**  
 The minimum climb gradients are as follows (required due to the airspace structure only):  
 - 6.4% for SID PETAP 1C, TURAL 1C, UTETA 1C up to FL110;  
 - 6.4% for SID RELNI 1C up to 3500';  
 - 6.0% for SID RUMOL 1C up to FL060.

Close-in obstacle: TREES, DIST is 3984m from THR RWY 10R, ELEV 115'.



BEARINGS AND TRACKS ARE MAGNETIC  
 ALTITUDES AND ELEVATIONS ARE IN FEET  
 DISTANCES ARE IN KILOMETRES