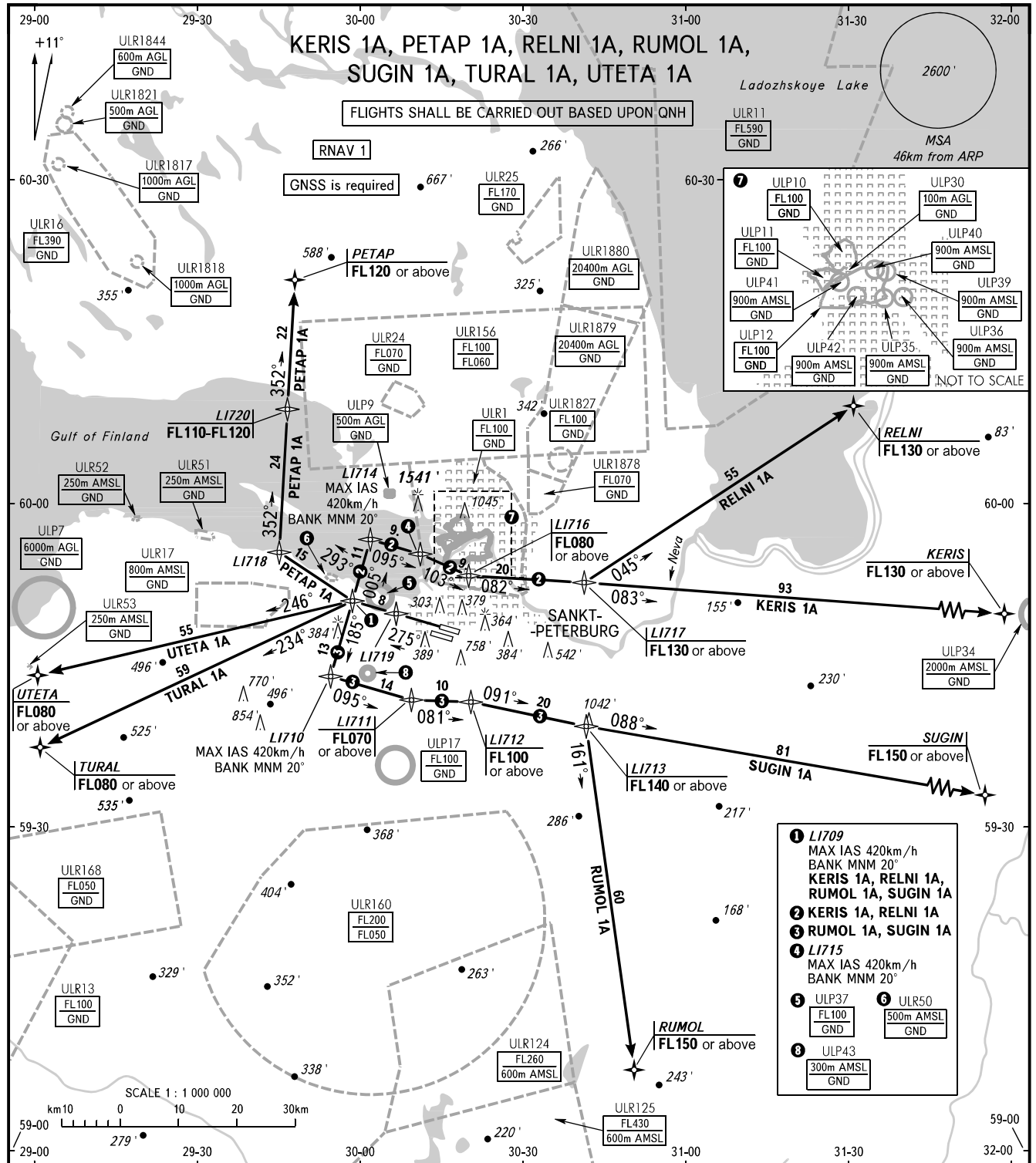


STANDARD DEPARTURE CHART
INSTRUMENT (SID) - ICAO

TRANSITION
ALTITUDE : 3500'

SANKT-PETERBURG, RUSSIA
PULKOVO
RNAV RWY 28R



TOWER	118.100
KRUG	120.300
APPROACH Sector 1 (EAST)	H24 119.300
Sector 2 (WEST)	0600-1600 125.200
Sector 2 (WEST)	1600-0600 119.300

WARNING
The minimum climb gradients are as follows (required due to the airspace structure only):
- 6.5% for SID KERIS 1A, RELNI 1A up to FL130;
- 6.1% for SID SUGIN 1A, RUMOL 1A up to FL120;
- 6.2% for SID PETAP 1A up to FL110.

BEARINGS AND TRACKS ARE MAGNETIC
ALTITUDES AND ELEVATIONS ARE IN FEET
DISTANCES ARE IN KILOMETRES