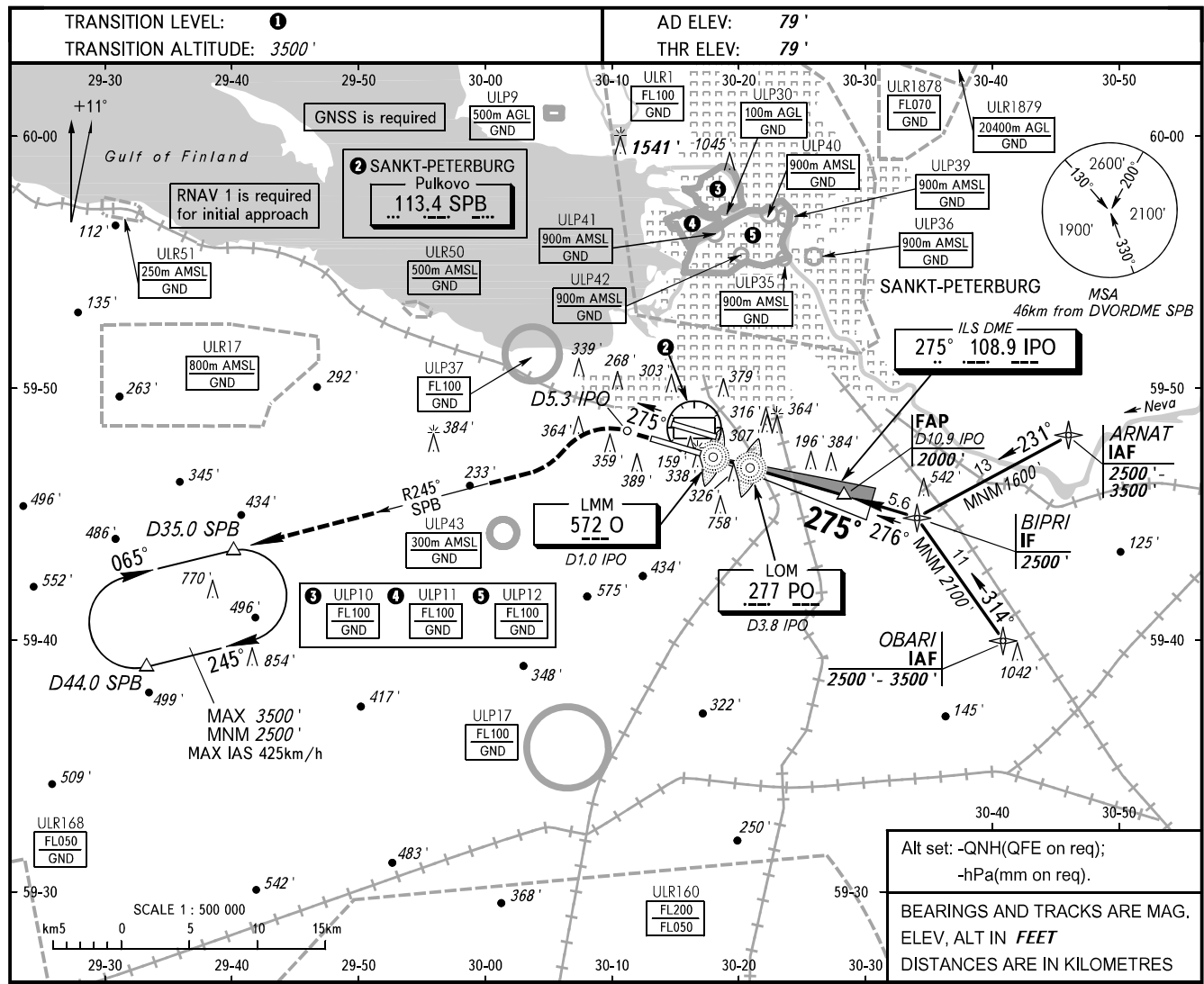


**INSTRUMENT  
APPROACH  
CHART - ICAO**

KRUG **120.300**  
TOWER **118.700**

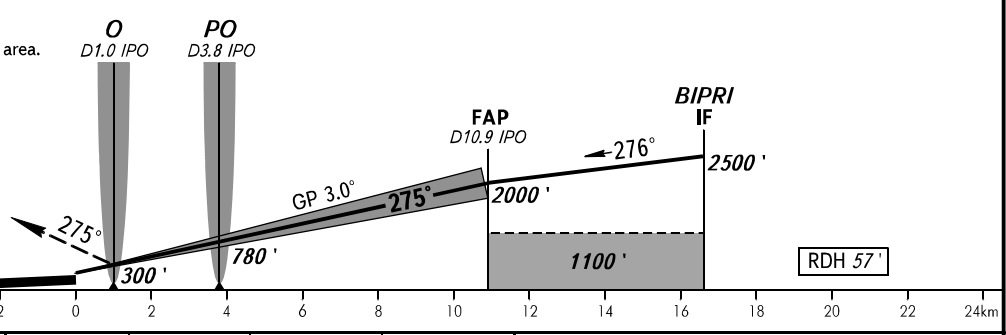
**SANKT-PETERBURG, RUSSIA**  
PULKOVO  
ILS Z RWY 28L CAT I



Alt set: -QNH(QFE on req);  
-hPa(mm on req).  
BEARINGS AND TRACKS ARE MAG.  
ELEV, ALT IN FEET  
DISTANCES ARE IN KILOMETRES

**MISSED APPROACH**

Climb straight ahead on track 275° to D5.3 IPO, turn LEFT to intercept R245° SPB, proceed to D35.0 SPB climbing to 2500', then join holding area.



OCA(H)		A	B	C	D								
Straight-in Approach	CAT I	224' (146')	236' (158')	244' (168')	255' (177')								
Circling		690' (610')	1060' (980')	1160' (1080')	1160' (1080')								
GROUND SPEED		km/h	150	180	210	240	270	300	330	360	390	420	450
RATE OF DESCENT		m/s	2.2	2.6	3.0	3.5	3.9	4.3	4.8	5.2	5.6	6.1	6.5

**1** TRANSITION LEVEL:  
- FL050 when QNH is 747mm mercury column or above;  
- FL060 when QNH is 720mm mercury column or above, but less than 747mm mercury column;  
- FL070 when QNH is less than 720mm mercury column.  
**NOTE:**  
1. Zero range of IPO DME is indicated at RWY 28L THR.  
2. Level flight segment is not AVBL before FAP.