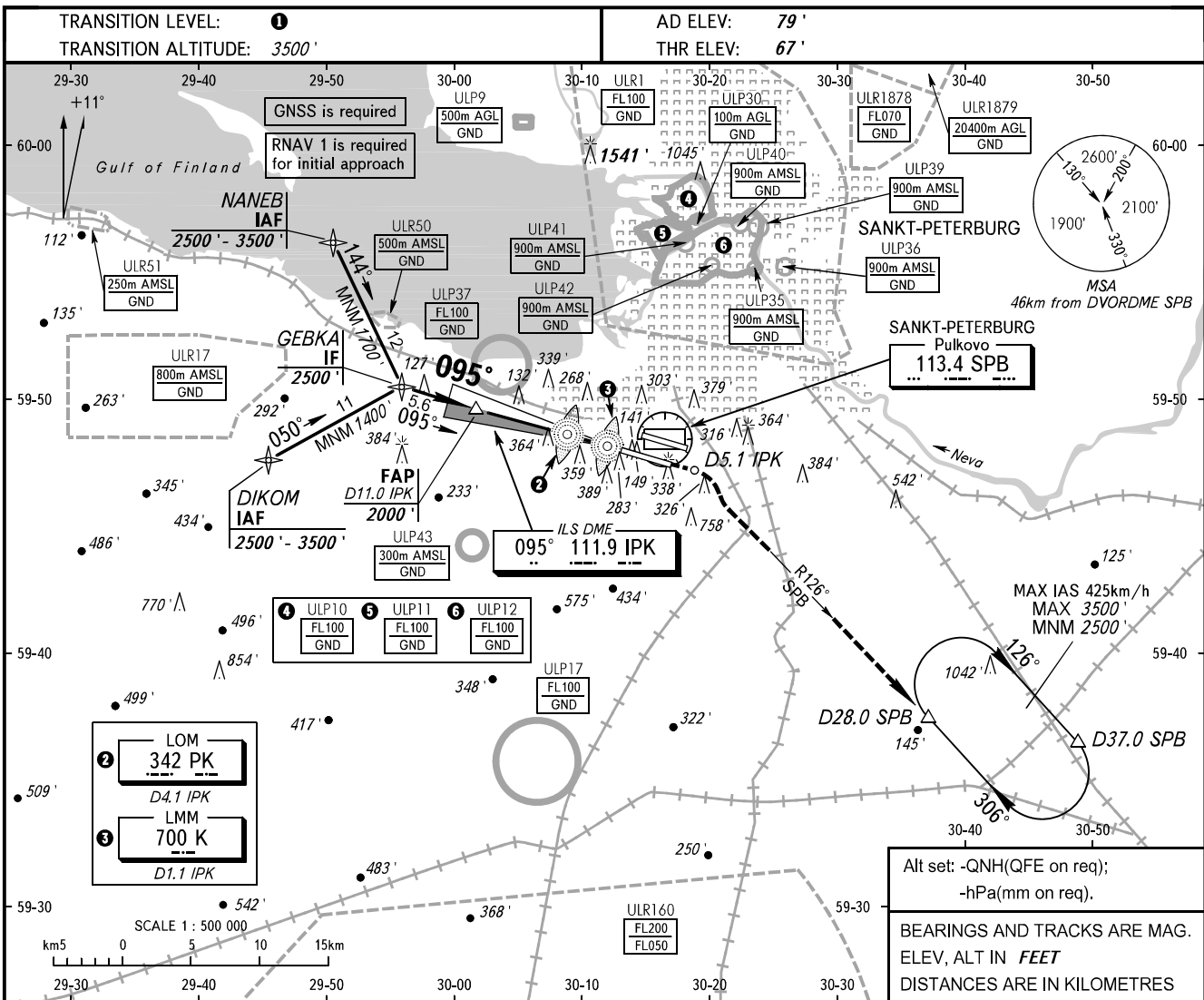


**INSTRUMENT  
APPROACH  
CHART - ICAO**

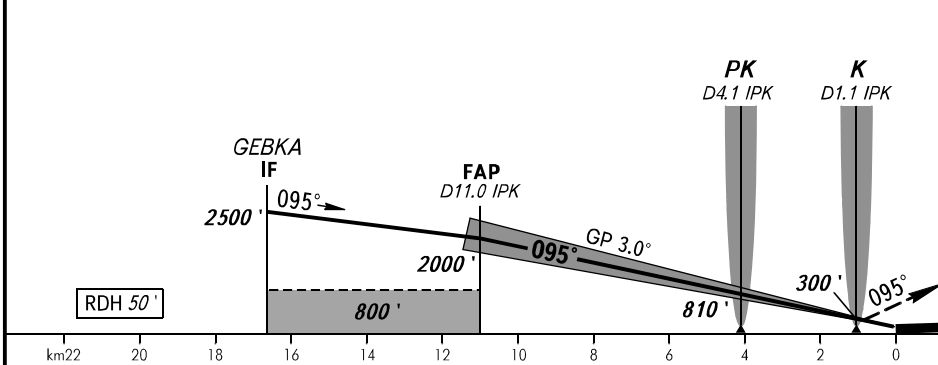
KRUG **120.300**  
TOWER **118.700**

**SANKT-PETERBURG, RUSSIA**  
PULKOVO  
ILS Z RWY 10R CAT I/II



Alt set: -QNH(QFE on req);  
-hPa(mm on req).  
BEARINGS AND TRACKS ARE MAG.  
ELEV, ALT IN FEET  
DISTANCES ARE IN KILOMETRES

**MISSED APPROACH**  
Climb straight ahead on track 095° to D5.1 IPK, turn RIGHT to intercept R126° SPB, proceed to D28.0 SPB climbing to 2500', then join holding area.



OCA(H)		A	B	C	D
Straight-in	<b>CAT I</b>	208' (142')	218' (152')	228' (162')	241' (175')
	<b>CAT II</b>	119' (53')	130' (64')	142' (76')	155' (89')
Approach					
Circling		690' (610')	1060' (980')	1160' (1080')	1160' (1080')

**1** TRANSITION LEVEL:  
- FL050 when QNH is 747mm mercury column or above;  
- FL060 when QNH is 720mm mercury column or above, but less than 747mm mercury column;  
- FL070 when QNH is less than 720mm mercury column.  
**NOTE:**  
1. Zero range of IPK DME is indicated at RWY 10R THR.  
2. Level flight segment is not AVBL before FAF.

GROUND SPEED	km/h	150	180	210	240	270	300	330	360	390	420	450
RATE OF DESCENT	m/s	2.2	2.6	3.0	3.5	3.9	4.3	4.8	5.2	5.6	6.1	6.5

CHANGE: New chart