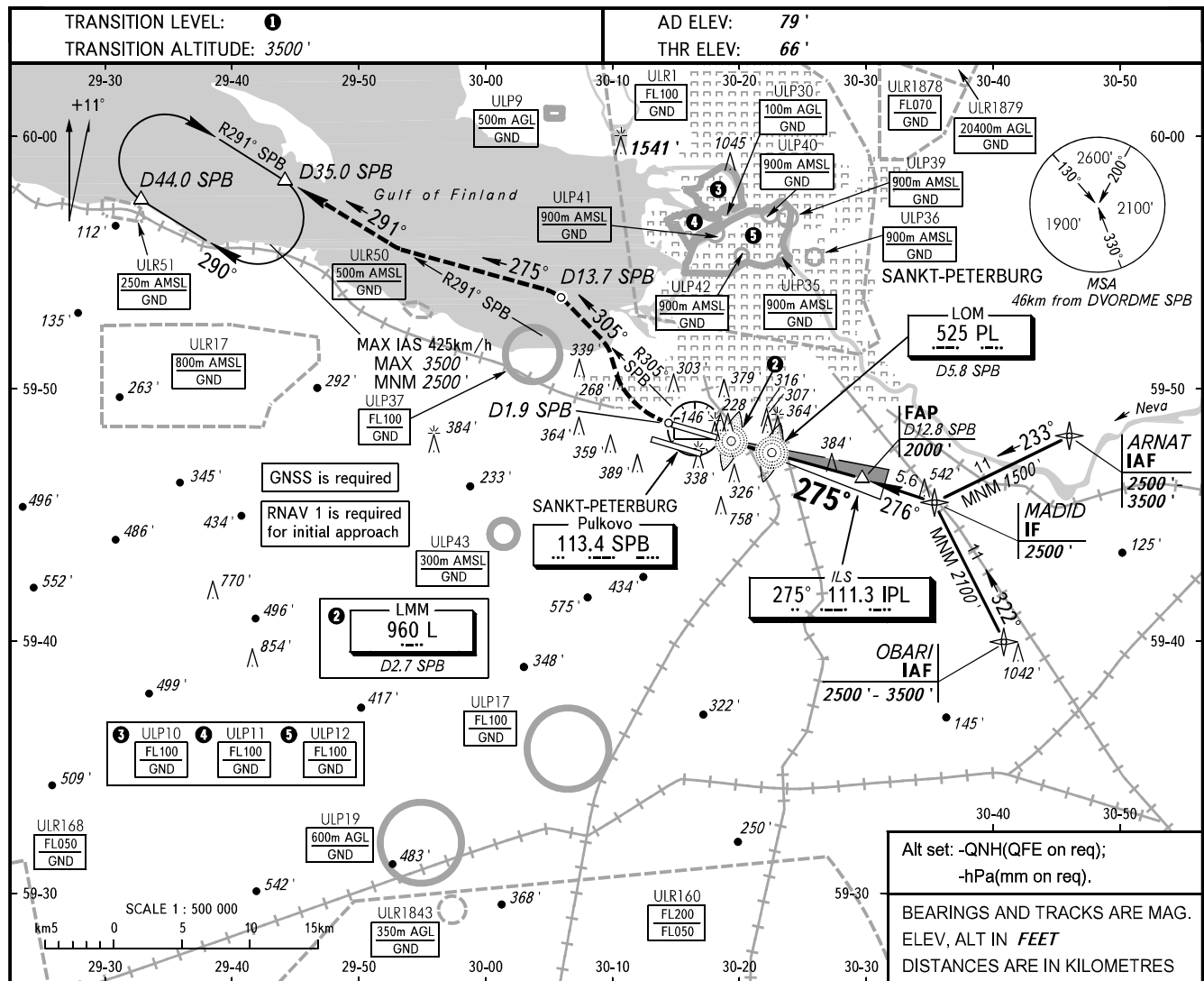


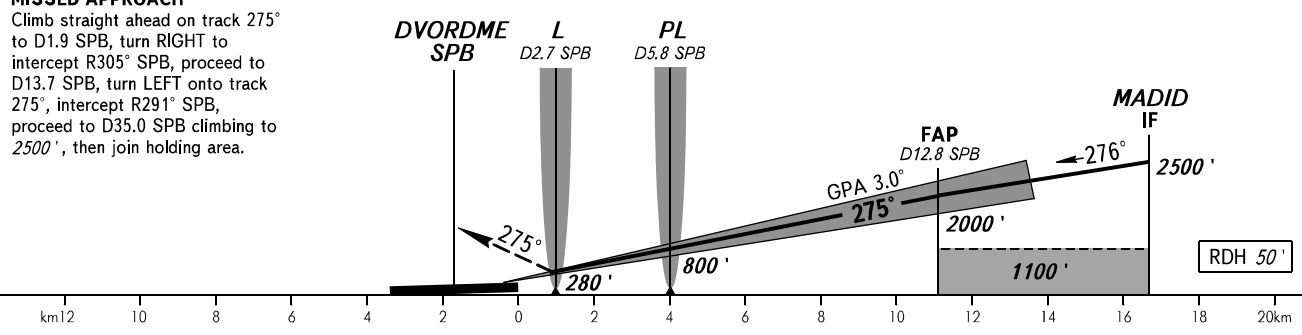
**INSTRUMENT
APPROACH
CHART - ICAO**

KRUG **120.300**
TOWER **118.100**

SANKT-PETERBURG, RUSSIA
PULKOVO
ILS RWY 28R CAT I/II/IIIA



MISSED APPROACH
Climb straight ahead on track 275° to D1.9 SPB, turn RIGHT to intercept R305° SPB, proceed to D13.7 SPB, turn LEFT onto track 275°, intercept R291° SPB, proceed to D35.0 SPB climbing to 2500', then join holding area.



OCA(H)		MNM climb gradient	A	B	C	D							
Straight-in	CAT I	2.5%	288' (222')	300' (234')	308' (242')	319' (253')							
		3.0%	255' (189')	267' (201')	275' (209')	286' (220')							
Approach	CAT II	2.5%	169' (103')	186' (120')	198' (132')	212' (146')							
		2.5%	169' (103')	186' (120')	198' (132')	212' (146')							
	CAT IIIA	4.0%	AVBL										
Circling			690' (610')	1060' (980')	1160' (1080')	1160' (1080')							
GROUND SPEED		km/h	150	180	210	240	270	300	330	360	390	420	450
RATE OF DESCENT		m/s	2.2	2.6	3.0	3.5	3.9	4.3	4.8	5.2	5.6	6.1	6.5

1 TRANSITION LEVEL:
- FL050 when QNH is 747mm mercury column or above;
- FL060 when QNH is 720mm mercury column or above, but less than 747mm mercury column;
- FL070 when QNH is less than 720mm mercury column.

NOTE
Level flight segment is not AVBL before FAF.

CHANGE: Units of measurement