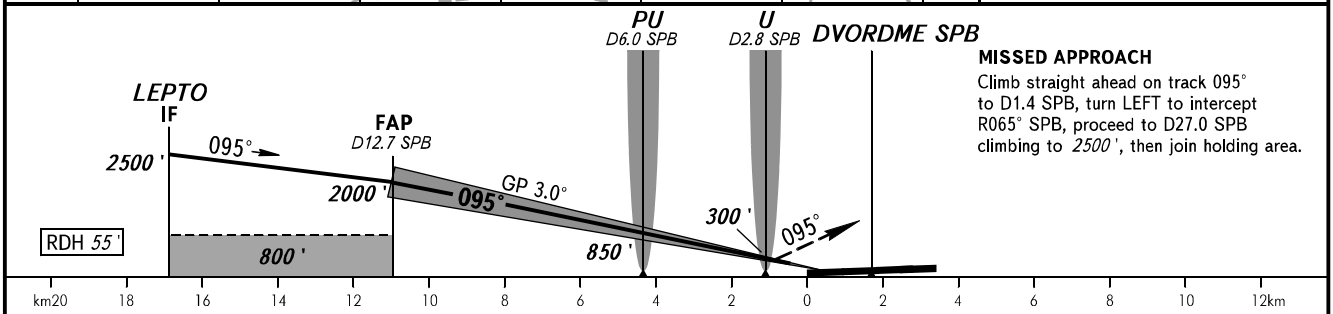
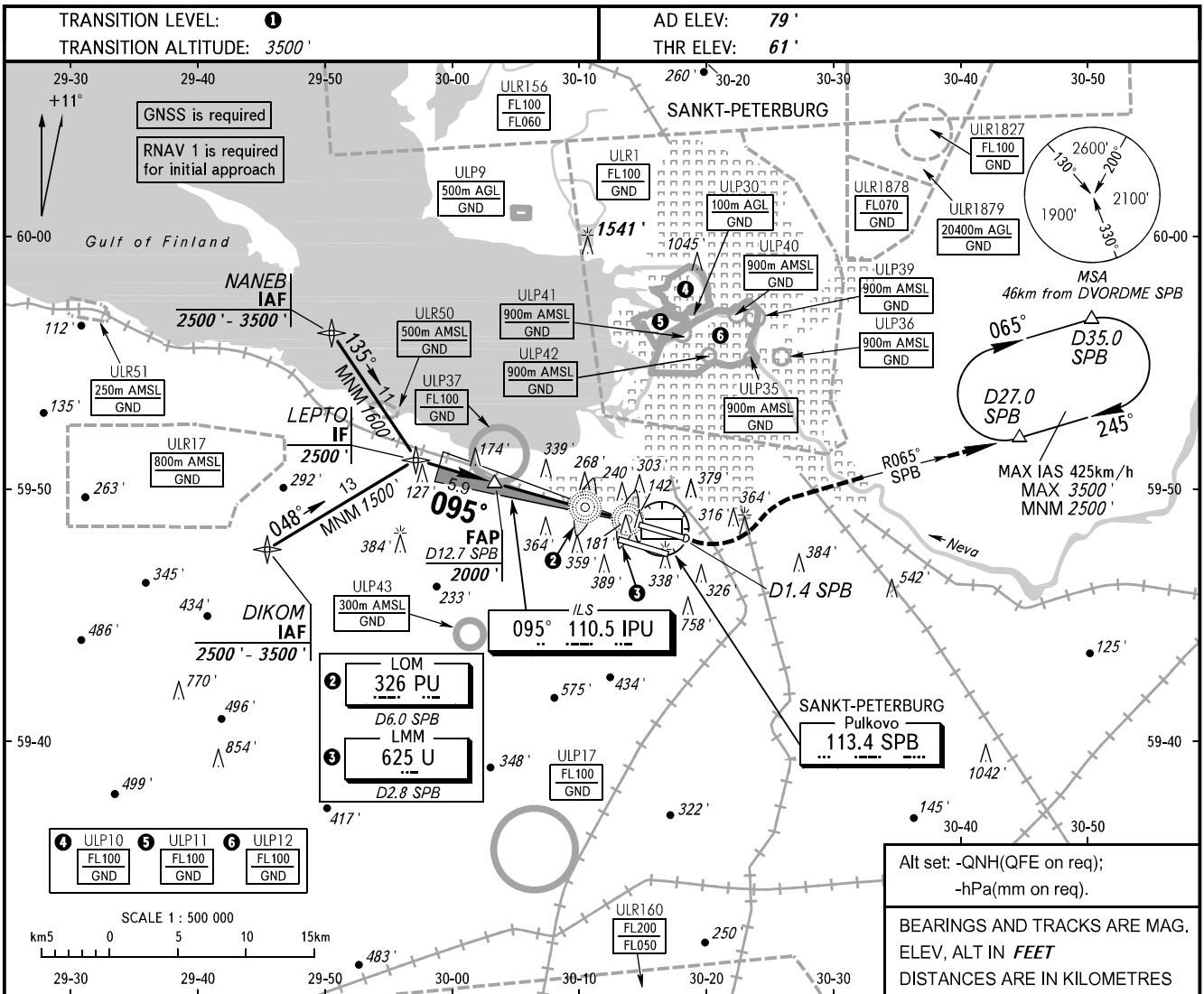


**INSTRUMENT
APPROACH
CHART - ICAO**

KRUG **120.300**
TOWER **118.100**

SANKT-PETERBURG, RUSSIA
PULKOVO
ILS RWY 10L CAT I/II/IIIA



		OCA(H)	MNM climb gradient	A	B	C	D						
Straight-in Approach	CAT I	2.5%	350' (289')	362' (301')	370' (309')	381' (320')	1 TRANSITION LEVEL: - FL050 when QNH is 747mm mercury column or above; - FL060 when QNH is 720mm mercury column or above, but less than 747mm mercury column; - FL070 when QNH is less than 720mm mercury column.						
		4.0%	243' (182')	255' (194')	263' (202')	274' (213')							
	CAT II	2.5%	202' (141')	219' (158')	231' (170')	245' (184')							
		3.0%	167' (106')	184' (123')	196' (135')	210' (149')							
CAT IIIA	2.5%	202' (141')	219' (158')	231' (170')	245' (184')	AVBL							
	5.0%												
Circling			690' (610')	1060' (980')	1160' (1080')	1160' (1080')							
GROUND SPEED		km/h	150	180	210	240	270	300	330	360	390	420	450
RATE OF DESCENT		m/s	2.2	2.6	3.0	3.5	3.9	4.3	4.8	5.2	5.6	6.1	6.5

CHANGE: New chart